



EXPERIENCE PURE EVENTS IN THE DALLAS/SMU AREA

Conveniently located in the center of everywhere you and your attendees want to be, the Dallas/SMU area provides easy access to Downtown Dallas, Southern Methodist University, Fair Park/Cotton Bowl, American Airlines Center and so much more.

Our dedication to making travelers feel instinctively cared for is complemented by individualized service. As an added convenience to our guests, we provide local transportation within a three mile radius and to Dallas Love Field Airport. Mockingbird Station is also within walking distance of the hotel and provides many options for shopping, dining and entertainment.

Discover the warmth of Magnolia throughout your stay in our tastefully redesigned hotel with a modern essence. Here, you'll discover an ideal event venue, as well as beautiful accommodations that are appointed with premium amenities to ensure your stay is immersed in all the comforts of home, including:

- Warm color schemes
- Plush Magnolia bedding with crisp linens
- 37" flat screen televisions
- Comfortable seating, and convenient mobile work desks
- Refrigerators available upon request for families and individual guests

Hotel Services & Amenities:

- Superior in-room body care products by LATHER®, made from the highest quality and effective natural ingredients to inspire a healthier, more radiant life
- Made-to-order, locally-sourced menus for breakfast, lunch and dinner
- An expanded Happy Hour from 4:00pm – 7:00pm daily
- The nightly temptation of fresh, house-made cookies from 8:00pm - 10:00pm, an ideal way to end the day
- Complimentary high speed Internet access
- Complimentary local town car transportation
- Same day dry cleaning
- 24-hour fitness room

MEETING FACILITIES

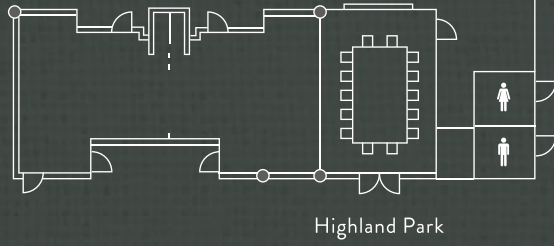
Nestled between downtown Dallas and the prestigious Highland Park neighborhood, our 12,000 square feet of flexible event space is ideally suited for maximum meeting productivity and memorable celebrations – all perfectly complemented by pure hospitality. Your Magnolia Dallas Park Cities meeting experience will be uniquely personalized to exceed your expectations with unique venues that can accommodate up to 400 attendees.

Number of Guest Rooms: 292
Number of Meeting Spaces: 12
Total Meeting Square Footage: 12,000
Maximum Attendees: 400

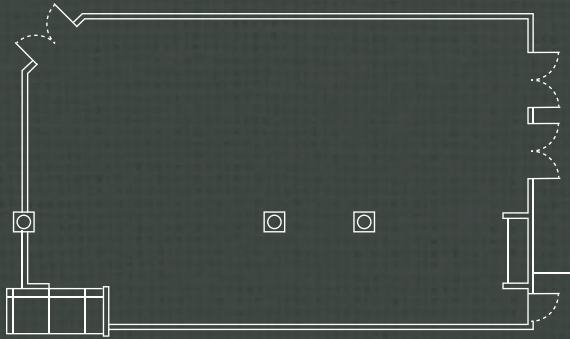
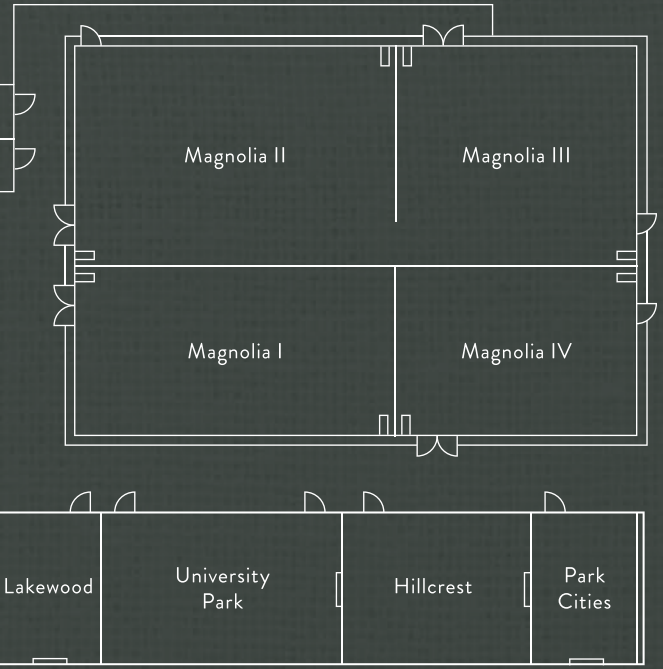
Complete Meeting Services include:

- 12,000 square feet of flexible meeting facilities and event space
- Custom floor plans with multiple table sizes and seating options
- State-of-the-art audio/visual
- Exceptional catering menus
- Friendly and experienced event professionals
- Team-driven pursuit for excellence

MOCKINGBIRD



MAGNOLIA GRAND BALLROOM



PARK CENTRAL

TOTAL SQ. FOOTAGE - 12,000

*floor plans not to scale

| NAME | SIZE | SQUARE FEET | THEATER | ROUNDS | CLASSROOM | U SHAPE | HOLLOW SQUARE | CONFERENCE | RECEPTION |
|--------------------------------|-----------------|---------------|---------|--------|-----------|---------|---------------|------------|-----------|
| MAGNOLIA GRAND BALLROOM | 66' X 94' X 12' | 6,204 | 749 | 344 | 324 | - | - | - | 650 |
| MAGNOLIA I | 28' X 53' X 12' | 1,484 | 160 | 96 | 90 | 33 | 52 | 50 | 155 |
| MAGNOLIA II | 37' X 53' X 12' | 1,961 | 206 | 120 | 120 | 42 | 64 | 50 | 210 |
| MAGNOLIA III | 37' X 41' X 12' | 1,517 | 142 | 96 | 84 | 36 | 52 | 44 | 155 |
| MAGNOLIA IV | 28' X 41' X 12' | 1,148 | 126 | 80 | 63 | 30 | 46 | 44 | 120 |
| MAGNOLIA I/II | 66' X 52' X 12' | 3,432 | 377 | 216 | 216 | 60 | 88 | - | 365 |
| MAGNOLIA III/IV | 41' X 66' X 12' | 2,706 | 288 | 176 | 144 | 51 | 76 | - | 285 |
| MAGNOLIA I/IV | 28' X 94' X 12' | 2,632 | 306 | 176 | 165 | 48 | 88 | - | 280 |
| MAGNOLIA II/III | 37' X 94' X 12' | 3,478 | 378 | 216 | 204 | 54 | 94 | - | 360 |
| MOCKINGBIRD | 18' X 48' X 15' | 864 | 77 | 56 | 48 | 27 | 36 | 34 | 75 |
| MOCKINGBIRD I | 18' X 25' X 15' | 450 | 28 | 24 | 18 | 12 | 18 | 17 | 30 |
| MOCKINGBIRD II | 18' X 24' X 15' | 432 | 28 | 24 | 24 | 15 | 22 | 17 | 40 |
| HIGHLAND PARK | 17' X 26' X 11' | 442 | - | - | - | - | - | 14 | - |
| PARK CENTRAL | 34' X 56' X 12' | 1,938 | 125 | 120 | 75 | 27 | 46 | 44 | 150 |
| LAKWOOD | 16' X 24' X 8' | 384 | 40 | 24 | 21 | 15 | 24 | 22 | 40 |
| PARK CITIES | 18' X 24' X 10' | 432 | 40 | 24 | 21 | 15 | 24 | 22 | 45 |
| UNIVERSITY PARK | 24' X 38' X 10' | 912 | 80 | 56 | 60 | 27 | 46 | 44 | 90 |
| HILLCREST | 24' X 30' X 10' | 720 | 60 | 48 | 42 | 21 | 34 | 30 | 75 |
| TOTAL SQUARE FOOTAGE | | 12,000 | | | | | | | |

